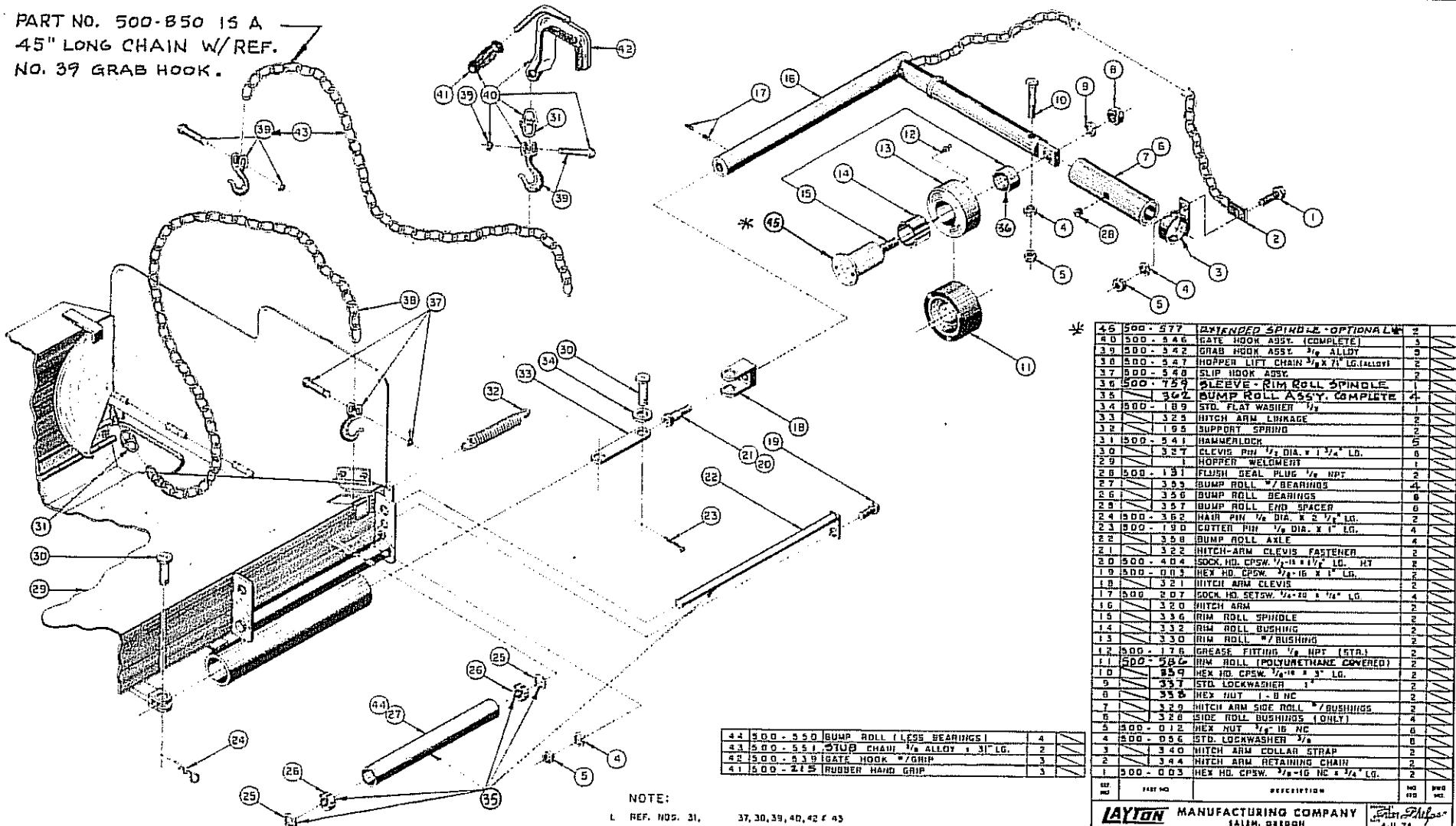


PART NO. 500-B50 IS A
45" LONG CHAIN W/REF.
NO. 39 GRAB HOOK.



QTY	PART NO.	DESCRIPTION	NO. OF	REV.
2	45 500-577	EXTENDED SPINDLE - OPTIONAL	2	
3	40 500-346	RATE HOOK ASSY. (COMPLETE)	3	
3	39 500-342	GRAB HOOK ASSY. 1/2" ALLOY	3	
2	17 500-327	HOPPER LIFT CHAIN 1/2" X 71" LG. (ALLOY)	2	
2	37 500-350	SLIP HOOK ASSY.	2	
1	36 500-759	SLEEVE - RIM ROLL SPINDLE	1	
4	35 342	BUMP ROLL ASSY. COMPLETE	4	
1	34 500-189	STD. FLAT WASHER 1/2"	1	
2	33 325	HITCH ARM LINKAGE	2	
2	32 195	SUPPORT SPRING	2	
5	31 500-541	HAMMERLOCK	5	
6	30 327	CLEVIS PIN 1/2" DIA. X 1 1/2" LG.	6	
1	29 327	HOPPER WELDMENT	1	
2	28 500-131	FLUSH SEAL PLUG 1/2" NPT	2	
4	27 333	BUMP ROLL #7 BEARINGS	4	
8	26 326	BUMP ROLL BEARINGS	8	
2	25 327	BUMP ROLL END SPACER	2	
2	24 500-362	HAIR PIN 1/2" DIA. X 2 1/2" LG.	2	
4	23 500-190	COTTER PIN 1/2" DIA. X 1" LG.	4	
4	22 358	BUMP ROLL AXLE	4	
2	21 322	HITCH-ARM CLEVIS FASTENER	2	
2	20 500-404	SOCK. HD. CPWSW. 1/2"-11 X 1 1/2" LG. HT	2	
2	19 500-003	HEX HD. CPWSW. 3/8"-16 X 1" LG.	2	
2	18 321	HITCH ARM CLEVIS	2	
4	17 500-207	SOCK. HD. SETSW. 1/2"-20 X 1 1/2" LG.	4	
2	16 320	HITCH ARM	2	
2	15 336	RIM ROLL SPINDLE	2	
2	14 332	RIM ROLL BUSHING	2	
2	13 330	RIM ROLL #7 BUSHING	2	
2	12 500-176	GREASE FITTING 1/2" NPT (STR.)	2	
2	11 500-586	RIM ROLL (POLYURETHANE COVERED)	2	
2	10 259	HEX HD. CPWSW. 1/2"-10 X 3" LG.	2	
2	9 357	STD. LOCKWASHER 1"	2	
2	8 355	HEX NUT 1.0 NC	2	
2	7 329	HITCH ARM SIDE ROLL #7 BUSHINGS	2	
4	6 328	SIDE ROLL BUSHINGS (ONLY)	4	
2	5 300-012	HEX NUT 1/2" X 16 NC	2	
2	4 500-056	STD. LOCKWASHER 1/2"	2	
2	3 340	HITCH ARM COLLAR STRAP	2	
2	2 344	HITCH ARM RETAINING CHAIN	2	
2	1 500-003	HEX HD. CPWSW. 3/8"-16 NC X 1 1/2" LG.	2	

4	44 500-550	BUMP ROLL (LESS BEARINGS)	4
2	43 500-551	SLIP CHAIN 1/2" ALLOY X 31" LG.	2
3	42 500-439	GATE HOOK #7 GRIP	3
3	41 500-215	RUBBER HAND GRIP	3

NOTE:
 1. REF. NOS. 31, 37, 30, 39, 40, 42 & 43 SERIAL NO. H-6404-B-3 AND UP.
 2. REF. NO 20, PART NO 500-404 IS ON PAVERS STARTING AT S_N 5410-B-2
 3. REF. NO 11, PART NO 500-586 IS AVAILABLE FOR USE WITH CHROME TRUCK RIMS.
 4. THE HITCH-ARM ASSEMBLY COMPLETE. PART NOS 345-R AND 345-L INCLUDE REF. NOS. 1 THRU 5, 7, 8, 9, 10, 12, 13, 14, 15, 16, 17, 18, 20, 23, 24, 30, 33, AND 34.

140160

REV. 1-85

LAYTON MANUFACTURING COMPANY
SALIM, OREGON

PAVER HITCH ARM ASSEMBLY

PAVER H-500-B PART NO 0-B91